

# MONTHLY MEMBERSHIP PROGRESS REPORT

District 321B2

Results as of: 4/30/2026

GMT:

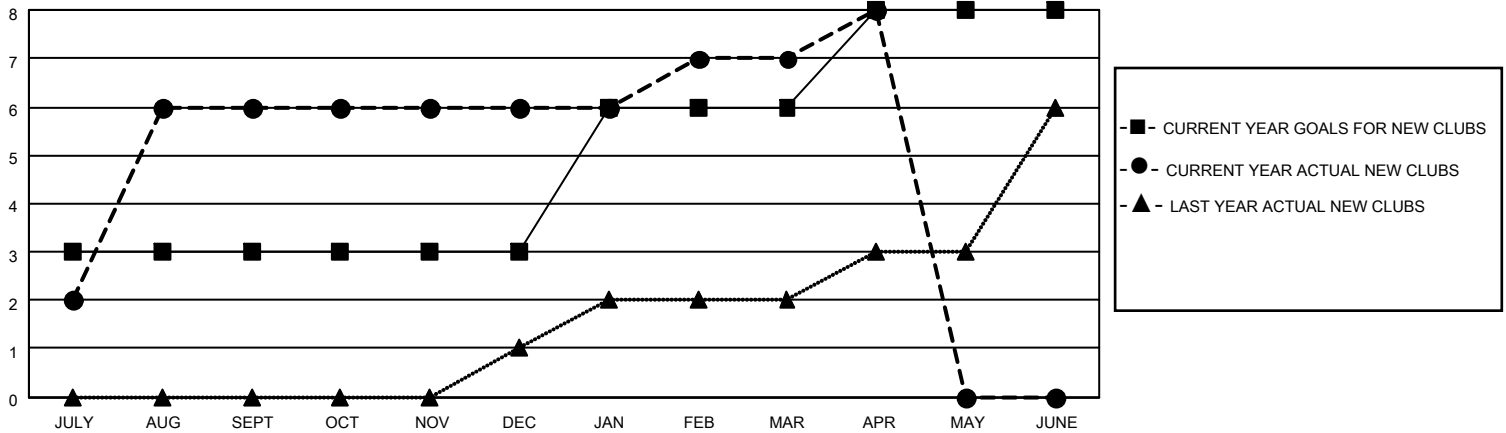
LOCATION INDIA

GMT CA

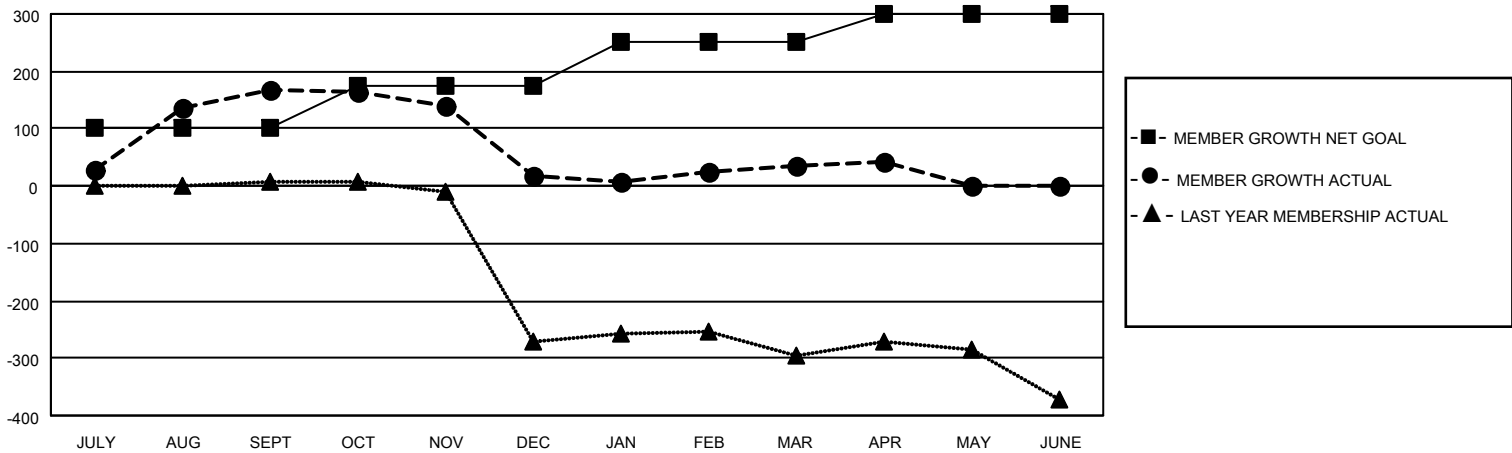
Clubs			
RESULTS FOR 2025-2026			
QUARTER	NEW CLUB GOAL	NEW CLUBS	DROPPED CLUBS
JULY/AUG/SEPT	3	6	0
OCT/NOV/DEC	0	0	4
JAN/FEB/MAR	3	1	0
APR/MAY/JUNE	2	1	0

Members			
RESULTS FOR 2025-2026			
QUARTER	MEMBER GROWTH NET GOAL	MEMBER GROWTH ACTUAL	DROPPED MEMBERS ACTUAL (including transfers)
JULY/AUG/SEPT	100	253	50
OCT/NOV/DEC	75	61	202
JAN/FEB/MAR	75	38	19
APR/MAY/JUNE	50	28	13

GOALS AND ACTUAL NEW CLUBS CUMULATIVE



GOALS AND ACTUAL MEMBERS CUMULATIVE



<b>DROPPED CLUBS: 4</b>	47 CLUBS OF 73 ADDED 1 OR MORE NEW MEMBERS	<b>GENDER DISTRIBUTION</b>	
		MALE 1,036 (67.01%)	FEMALE 510 (32.99%)
<b>DROPPED MEMBERS</b>		<a href="#">CLICK HERE FOR CUMULATIVE MEMBERSHIP DATA</a>	TOTAL FAMILY UNIT MEMBERS 466
DECEASED 3	CLUB CANCELLED 64		FAMILY MEMBERS PAYING HALF DUES 258
OTHER 216	TOTAL 283		